

VIRTUS

WINDOW & DOOR SYSTEMS

TOMORROW'S TECHNOLOGY TODAY



CASEMENT WINDOW

X7



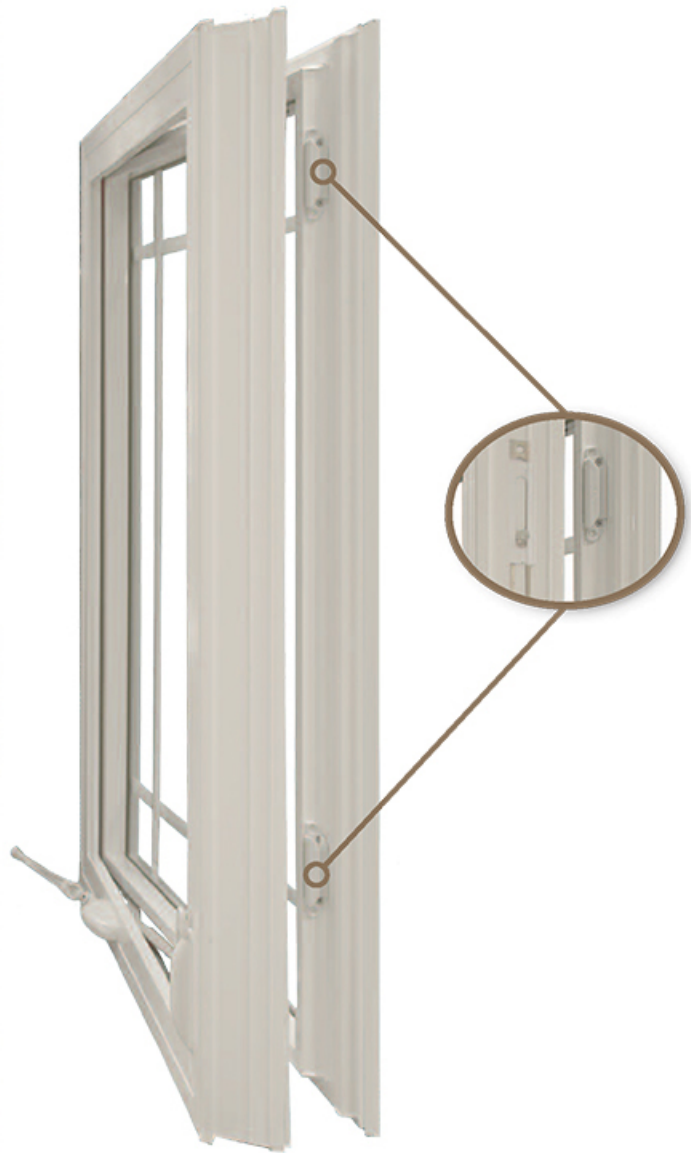
practicality



elegance



versatility



A PROGRESSIVE MULTI-POINT LOCKING SYSTEM allows for a weather-tight seal by drawing the sash firmly and securely to the master frame. The multi-point locking system also offers added security by providing additional points of reinforcement on the window.



Awning - 750 Series

The awning offers a streamlined look in a window which is practical in areas with obstructions. It cranks out smoothly for air circulation while protecting your home from the elements.

INTERIOR & HARDWARE OPTIONS



*Euro-White Finish
Euro-White Lock
(Standard)*



*Almond Finish
Almond Lock
(Optional)*



*Cocoa Finish
Cocoa Lock
(Optional)*



*Melrose Cherry Finish
Antique Brass Lock
(Optional)*



*Cognac Finish
Brushed Nickel Lock
(Optional)*



*Natural Finish
Brushed Nickel Lock
(Optional)*

EXTERIOR OPTIONS



EURO-WHITE



ALMOND



COCOA



BRONZE



OKNA Windows offers three exterior color selections in addition to the standard Euro-White option to give your home a distinct look and enhance its curb appeal.

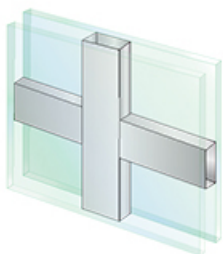
You can also special order custom exterior colors from a virtually unlimited selection of paints. Our paints are environmentally safe and durable, giving your exterior a vibrant and long-lasting color finish.

All finishes except Euro-White are available at an additional charge. Printed colors may not match the product's actual color. Please visit a local dealer to view actual color samples.

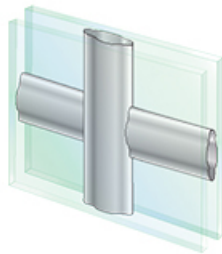
Looking for a stunning design to instantly set your home apart both inside and out. A choice of decorative grids can highlight the architectural style that speaks to you.

GBG (Grids between glass) consist of aluminum bars sealed in the insulating airspace between the two panes of glass. Because the interior and exterior glass surfaces are not affected, cleaning your windows is a much easier task. GBG grids on two tone windows are available with matching interior and exterior colors.

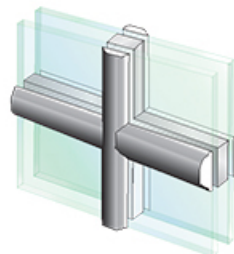
GRIDS



**Flat Grids
between glass**



**Contour Grids
between glass**



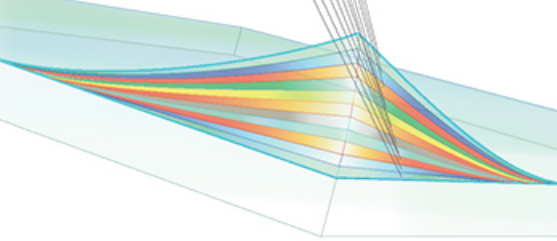
Simulated Divided Light (SLD)
Permanent interior and exterior grids will provide a truly authentic look. Interior grids are available in a Euro-White color or Wood Laminate. External grids are available in Euro-White or colors to match products exterior.

FOCUS ON ENERGY SAVINGS

REFLECTING GLASS

ClimaGuard™ heat reflective coatings are microscopically thin layers of metal & metal oxide that act like a filter – some energy is transmitted, some energy is reflected.

- Silicone Nitrid Barrier
- Tin Oxide Optical Filter
- Nickel-Chrom Adhesive Barrier
- Silver Thermal & Solar Performance
- Zinc Oxid Performance Enhancing
- Tin Oxide Optical Filter
- Nickel-Chrom Adhesive Barrier
- Silver Thermal & Solar Performance
- Zinc Oxid Optical Filter
- Titanium Dioxide Optical Enhancing
- Silicone Nitrid Barrier

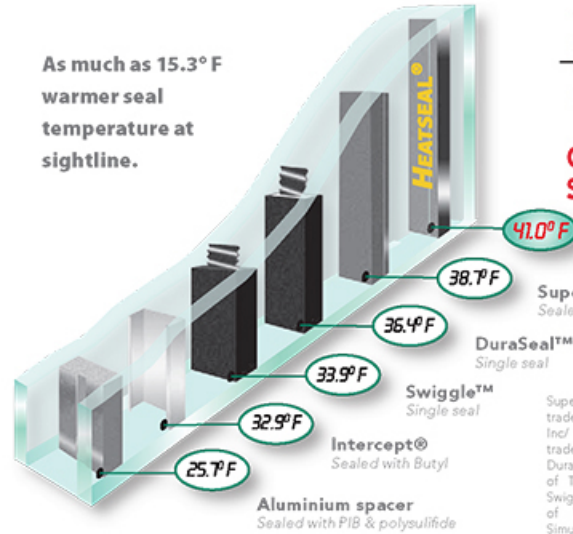


ClimaGuard is a trademark of Guardian Industries Corp.

Our Heatseal Spacer gives your home excellent thermal efficiency and drastic reduction of condensation.

THE SPACER

As much as 15.3° F warmer seal temperature at sightline.



Temperature Outside - 0° F
Temperature Inside - 70° F

Our Heatseal® Spacer

Super Spacer®
Sealed with Butyl

DuraSeal™
Single seal

Swiggle™
Single seal

Intercept®
Sealed with Butyl

Aluminium spacer
Sealed with PIB & polysulfide

Super Spacer® is a registered trademark of Edgetech I.G., Inc. • Intercept® is a registered trademark of PPG Industries, Inc. DuraSeal is a registered trademark of TruSeal Technologies, Inc. • Swiggle is a registered trademark of TruSeal Technologies, Inc. Simulation performed by Enermodal engineering, Ltd. using Window 5.2. All air spaces are 0.562" wide 0.033 emittance low-E glass.

ENERGY SAVING PACKAGES

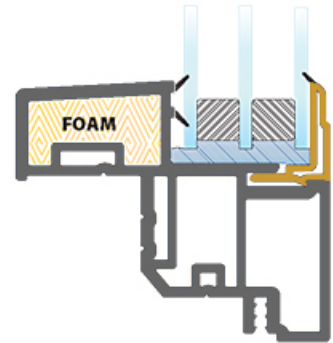
DELUXE PACKAGE

- Energy Saving Package
- Foam-filled insulated extrusions



TRIPLE PANE
GLASS PACKAGE
with Deluxe Package
and optional krypton gas offers

47% better U-Value



than New Energy Star Requirements for Northern Zone*

* Effective January 4, 2010 the minimum U-Value for ENERGY STAR in the Northern Region has been revised from of 0.35 to 0.30.

TOP PERFORMERS

ENERGY SAVING GLASS
DOUBLE PANE
ARGON GAS



DELUXE PACKAGE
DOUBLE PANE
ARGON GAS



DELUXE PACKAGE
TRIPLE PANE
ARGON GAS



DELUXE PACKAGE
TRIPLE PANE
KRYPTON GAS



All results numbers are based on tested window sample by NFRC and AAMA testing window guidelines. Use for comparison purposes only. Actual values may vary depending on installation, size of the window, and other conditions.

All illustrations, photographs, and specifications in this publication are based on the latest product information available at the time of printing. Some windows shown with optional features. See the actual product for complete accuracy. The manufacturer reserves the right to alter or discontinue any model or specification without notice.